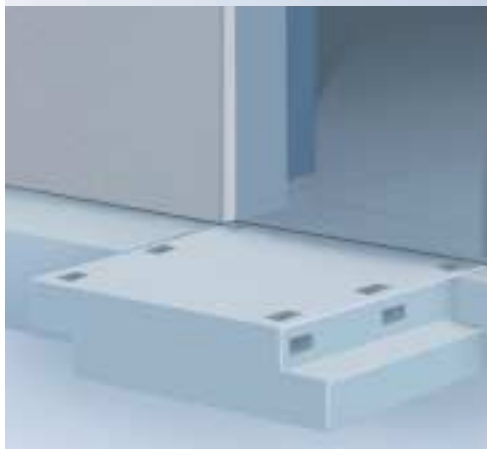
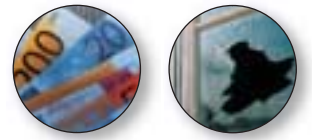


# Rosengrens Seginus

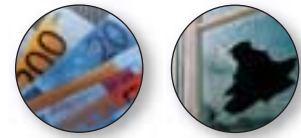
High security prefabricated strong room



Rosengrens high security strong rooms Seginus are tested in accordance with the European standard for burglary protection EN 1143-1 from Grade V up to Grade XII. The entire range has been additionally tested for resistance against explosives. The strong rooms in Grades IX to XII are also tested for resistance against specialised attacks with diamond drill equipment. The full range is ECB•S certified. The high specification materials and technology of the strong room consists of modular panels which are assembled together using a welded method of construction. The strong room Seginus can be integrated into various environments, e.g. new buildings, existing buildings and to strengthen strong room units. Seginus offers fast assembly or disassembly and good utilisation of existing space.

# Rosengrens Seginus

## High security prefabricated strong room



RSGB.1045R1

### Product data

Grade	EN Grade	EX option	CD option	Wall thickness (mm)	Weight (kgs) per m <sup>2</sup> wall, floor, ceiling	Max span* for a permissible ceiling load of	
						100 kp/m <sup>2</sup>	500 kp/m <sup>2</sup>
Seginus V (EX)	V	Yes	–	100	360	4000	4000
Seginus VI (EX)	VI	Yes	–	100	360	4000	4000
Seginus VII (EX)	VII	Yes	–	100	360	4000	4000
Seginus VIII (EX)	VIII	Yes	–	100	360	4000	4000
Seginus IX (EX)(CD)	IX	Yes	Yes	125	440	5250	4750
Seginus X (EX)(CD)	X	Yes	Yes	150	520	5200	5000
Seginus XI (EX)(CD)	XI	Yes	Yes	220	730	5060	5060
Seginus XII (EX)(CD)	XII	Yes	Yes	280	920	4940	4940

\* (clearance)

**Burglary resistance:** Rosengrens high security strong rooms Seginus are tested in accordance with the European standard for burglary protection EN 1143-1 from Grade V up to Grade XII. The entire range has been additionally tested for resistance against explosives. The strong rooms in Grades IX to XII are also tested for resistance against specialised attacks with diamond drill equipment. The full range is ECB•S certified. As a result, the Seginus strong rooms are available in Grades V to XII with optional resistance against explosives (EX) and optional extra resistance against diamond core drill attacks (CD).

**Features:** The Seginus strong room consists of modular wall, roof and floor panels which are constructed from steel pans filled with a reinforced concrete matrix. On completion, the appearance of the vault can be improved by traditional methods e.g. plaster-board cladding or blockwork and plaster finish. The room is secured by a strong room door and Rosengrens strong room door Segin of the same security standard is a recommended choice. Other alternatives are available upon request. The vault configuration depend on the project requirements and the strong room can be supplied and installed in both 5 sided and 6 sided structures.

**Ventilation:** The Seginus strong room is ventilated by a VdS approved ventilation system. Compact and easy to connect the system allows a cross-section flow of 150 cm<sup>2</sup> approx.

**Alarm system:** Each individual panel is supplied with 2x21 mm diameter, cranked entry points to allow for power, alarm and telephone cables. Tailormade positions can be specified at the clients request.

**Design:** The strong room Seginus can be designed on a tailormade basis, to suit any shape or size and can be increased in size by adding more panels if an expansion is needed. The strong room Seginus is internally finished with primerpaint over steel panels. Externally the panels are finished in fair-faced concrete. Other finishes can be applied on completion of the vault, to improve the visual appearance.

**Quality management system:** The Rosengrens strong rooms Seginus are all manufactured in accordance with the ISO 9001 quality management system under ECB•S managed audits.